



# Information

9/11/2024

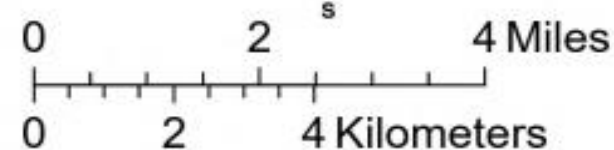
Homestead Complex  
OR-UPF-240311

9483 acres at 9/10/2024 at 0044 PDT

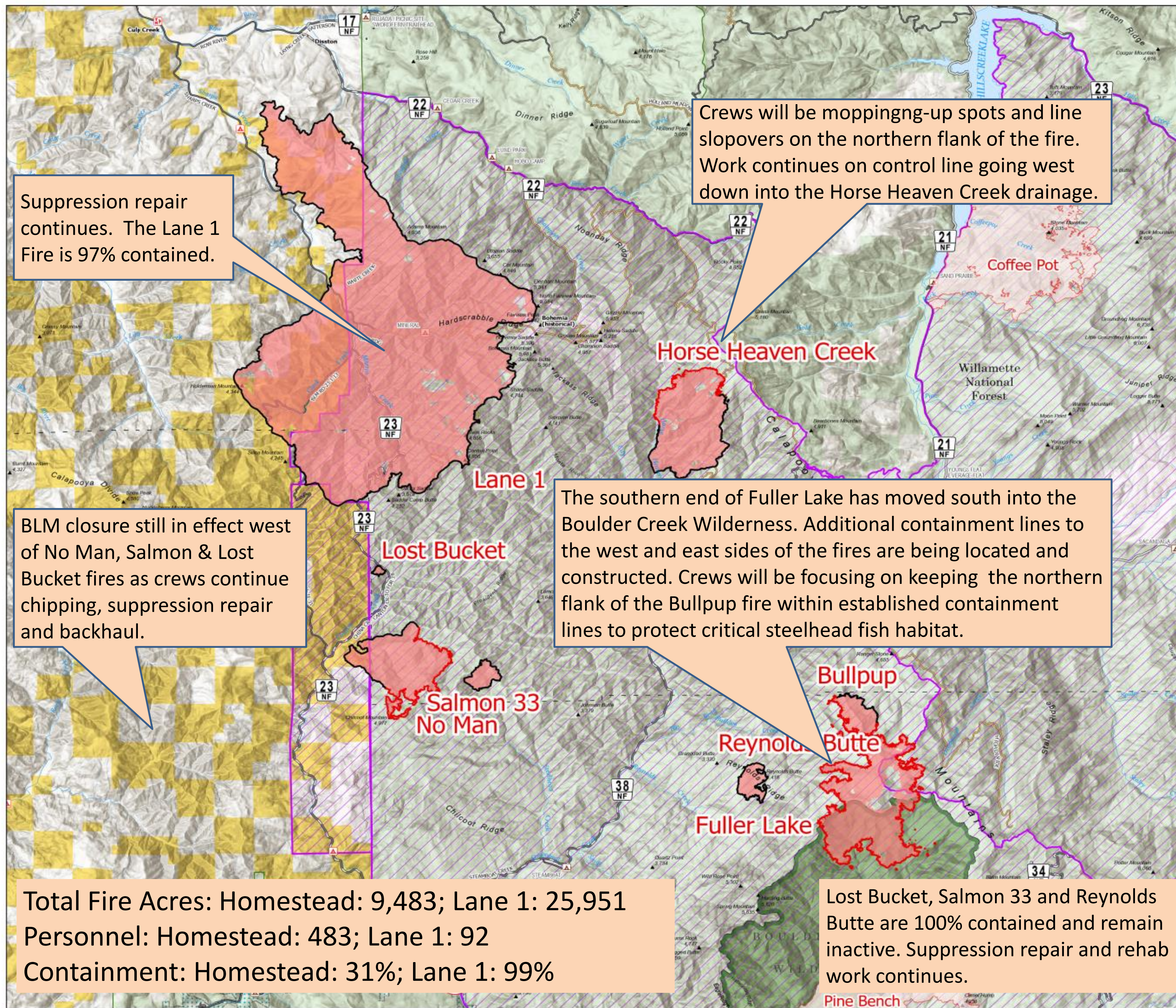
Cottage Grove - Lane 1  
OR-771S-000028

25,950 acres at 9/9/2024 at 2228 PDT

- Contained
- Uncontained
- Wildfire Daily Fire Perimeter - Homestead Complex & Lane 1
- Wildfire Daily Fire Perimeter - Adjacent Incidents
- FS Wilderness Boundary
- Bureau of Land Management Lands
- Forest Service Land
- Forest Service Closure Area
- BLM Closure Area
- Road, Paved
- Road, Dirt/Gravel



1:101,852 | NW8 | 9/11/2024 0647  
IR Flight  
North American 1983 Datum, Lat/Long Grid



Suppression repair continues. The Lane 1 Fire is 97% contained.

Crews will be mopping-up spots and line slopovers on the northern flank of the fire. Work continues on control line going west down into the Horse Heaven Creek drainage.

BLM closure still in effect west of No Man, Salmon & Lost Bucket fires as crews continue chipping, suppression repair and backhaul.

The southern end of Fuller Lake has moved south into the Boulder Creek Wilderness. Additional containment lines to the west and east sides of the fires are being located and constructed. Crews will be focusing on keeping the northern flank of the Bullpup fire within established containment lines to protect critical steelhead fish habitat.

Total Fire Acres: Homestead: 9,483; Lane 1: 25,951  
Personnel: Homestead: 483; Lane 1: 92  
Containment: Homestead: 31%; Lane 1: 99%

Lost Bucket, Salmon 33 and Reynolds Butte are 100% contained and remain inactive. Suppression repair and rehab work continues.